

OPERATION HORMUZ

AIR FORCE 06 RAINHAMMERS

BRIEFING MATERIAL (CLASSIFIED)



MISSION: CM-2025 / 2026
AL DHAFA AFB & AL MINHAD AFB
380TH AIR WING GROUP
2011.07.09



SITUATION UPDATE

Tropical Cyclone Dora made landfall near the Iran-Pakistan border before sweeping westward along the southern Iranian coastline. Although the storm quickly weakened, it brought intense thunderstorms and heavy rainfall across the region, severely disrupting naval aviation operations. As a result, Day 18 marked the busiest operational day for U.S. Air Force assets based in the United Arab Emirates, which were tasked with absorbing much of the combat sortie load. Despite adverse weather conditions, a "Hawks" flight successfully executed a precision strike last night on the Sirjan Golgothar Industrial Complex, neutralizing a key weapons manufacturing facility. On the ground, coalition forces achieved critical advances. Lar Air Base and the surrounding city region are now under full allied control, enabling expanded logistical throughput and forward basing. Simultaneously, forces on the eastern front secured Faryab and are advancing rapidly toward Jiroft. However, progress in the battle for Bandar Abbas has been limited. The storm system hampered CAS operations, and coalition aircraft came under repeated harassment from Russian mercenary fighters operating out of Shiraz Air Force Base. These hostile fighters equipped with full fuel loads and air-to-air weapons, have exploited terrain masking, flying low-level through valley routes to bypass our frontline CAP coverage and ambush CAS platforms near Bandar Abbas. Intelligence confirms these aircraft originate from Shiraz AFB and operate under the support of localized radar coverage and short-range air defense systems. In response, Central Command has authorized a high-priority deep strike mission targeting Shiraz AFB. The objective is twofold: neutralize the Russian mercenary fighter threat at Shiraz AFB and destroy the Shiraz Weapons Factory believed to be supplying advanced munitions. Due to the presence of multiple GPS jamming systems deployed throughout the city, GPS-guided munitions are deemed ineffective for this mission. Therefore, laser-guided ordnance will be employed as the primary strike method. The strike package includes two F-16C flights and two F-15E flights, escorted by two fighter sweep F-15C flights and two SEAD F/A-18C flights. These units will conduct aerial refueling over the Bastak region, regroup over Lar, and then begin ingress toward Shiraz to execute the attack. Concurrently, two A-10C flights have been tasked with a CAS operation over Bandar Abbas. Their mission focus is to find and take out the remaining AAA and artillery positions in preparation for a major ground assault into the city scheduled for Day 20. Success in both the Shiraz strike and the Bandar Abbas CAS mission is critical to ensuring air superiority and freedom of maneuver for tomorrow's urban street battle. Think not the storm is over, as rainhammers are about to fall from the sky.



MISSION BRIEFING

Package #2025: Viper 1-1 is assigned as the package mission commander. Viper 1 & 2 and Dodge 1 & 2 will takeoff from Al Dhafra Air Base at 0710 local time, while Hawk 1 & 2 will takeoff from CVN-71 in the Hormuz Strait. After takeoff, all flights will proceed to Waypoint 2 (WP2) and complete rendezvous at FL250 before 0725LT. Then at 0725 LT, all flights to push for WP3. switch UHF to Wizard at CH7 and check in. Continue ingress to WP4 (AAR) at the speed specified in the briefing card. Switch to the tanker frequency for aerial refueling. Viper and Dodge flights will refuel with Texaco 3 and 4, while Ford will contact Texaco 6. Refueling operations should be completed by 0815LT.

Once finished, return to Wizard at CH7 and regroup at 30,000 feet at WP5 (REG), where all flights shall orbit until every flight report mission ready and fence in (by Players). At 0820L, the package should start to push towards WP6 (TGT). 100NM from WP6, Fords should be combat ready and shoot down any enemy airborne CAP flights in the Shiraz region. 80NM from WP6, Hawks flights will begin SEAD attack against the SA-10 site and SA-6 site. Vipers and Dodges shall follow Hawks and Fords with 5-10NM interval, and if necessary, orbit along the route until safe ingress is ensured. Once the air is clear, Ford 1 and Ford 2 shall proceed to WP6 (TAR) and perform TARCAP task with VUL Time 30 min. Ford 1 will fly a typical 40NM TARCAP route to the west of WP6, whilst Ford 2 will fly a similar 40NM TARCAP route to the east of WP6. Hawk 1 and Hawk 2 will fly at 25,000 feet and continue to provide SEAD coverage and engage at opportunity.

20NM from WP6 (TGT), Vipers and Dodges should finish final weapon checks, descend below the clouds and start their IP inbound. For Viper 1, the targets are eight key infrastructures under Russian mecenary group's operation, including oil and fuel bunkers, weapon storages, jet maintenance repairshop, radars and command center building. Each flight member has been assigned with two targets, so these eight targets should be destroyed with two passes. There is not attacking course limitation on these targets, but to keep safe deconfliction, Viper 1 members will use attack course 300, egress south for 10NM, turn east for another 10NM until reaching Maharlu Lake, then turn back northwest for the second pass. Viper 2 will use attack course 270, egress south for 5NM, turn east for 10NM until reaching the center of Maharlu Lake. Viper 2 should orbit above Maharlu Lake at 15,000-20,000 feet, priority is any moving fighter jets along the taxi way, then any stationary aircraft parking on the ramp. We don't want to let the enemy have any fighter jets get airborne and cause additional troubles for us.

PART A. MISSION BRIEFING

MISSION: CM-2025 / 2026



Dodge 1 and Dodge 2 will proceed to attack Shiraz Weapon Factory by Khoshk River along the north side of the city. The factory is surrounded by civilian buildings, the attacking course is limited from 000 to 045, so the explosion debris would most probably fall to the river. There are ten targets including weapon workshop, fuel tanks and processors, assembly houses, warehouses and R&D center building. The attack on these targets should be completed with 3 passes. We recommend 030 for attack course, egress south for 10NM, turn west for 6NM, then turn northeast again for the next pass.

Keep in mind that VUL Time is 30 min, as more Russian fighters are anticipated to scramble from Isfahan AFB. Once 30 min expired, or after the attack is completed, Vipers and Dodges should report to the mission commander, who shall give egress order. The package shall egress via WP7 (EGR). Hawks will depart from the package from WP7 and fly back to CVN-71, Vipers and Dodges will fly to WP8 for landing at Al Dhafra AFB and Fords will fly to WP8 for landing at Al Minhad AFB. No aerial refueling is scheduled at egress leg but Texaco 5 will be available about 40NM from U.A.E coast near WP8. Good luck!

Package #2026: Hawg 1 and Hawg 2 are assigned CAS task in Bandar Abbas City. Their primary role is to provide effective CAS support mainly focusing on the city's AAA, artilleries and other short-range air defense assets. Flights will depart at 0710L and regroup at WP2 at FL150 and push time is 0725L. At WP3, flights will check in and ingress to WP4 and perform arial refueling. Then flights will proceed to WP5 at FL150 and FL160 to contact JTAC, Enfield or Springfield, to get targets assignment. Intel shows that the defense army have deployed cannon guns on top of high-rise buildings and use them as a powerful defensive weapon, these cannons are priority. Our allied ground forces are stationed at the outskirts of the city, check the chart#190630. The major offensive move is tomorrow, our task is to take out as much as possible the air defenses in the city. Once we dump all the weapons on the targets, we will egress via WP7, and fly back to Al Minhad AFB for refueling and reloading, and possibly some maintenance before the afternoon CAS mission in the same city. Good luck!

[Designer's Note]

1. AI Flight will be activated at 10 minutes after mission start if no Players sit in a flight.
2. Recommend to pause game until all Players are in seats and ready.
3. If in-game JTAC ask you to depart after hitting all targets in one CAS task, you can contact him again to get the next CAS task.

PART B. TACTICAL INFORMATION

MISSION: CM-2025 / 2026



BASIC INFORMATION

START TIME 9-JUL-2011 0700LT (0300UTC)

TAKEOFF TIME 0710LT LAND TIME 1005LT

HOME FREQ AL DHAFRA 251.1AM TCN 96X AL MINHAD 250.1AM

WX RAIN SR 0531LT SS 1912LT TEMP 20 C CLD 8K WIND 100 8KTS GD VSBY

MISSION OBJECTIVES

#2025 PRI Destroy Russian Mercenary Infrastructures in Shiraz AB
SEC Destroy Iranian Shiraz Weapon Factory in Shiraz City
TER Destroy Russian Mercenary Aircraft in Shiraz AB
#2026 PRI Provide effective CAS at Bandar Abbas City

THREAT ANALYSIS

Air to air F-4, F-14, Mig-29; Su-27, Su-30

Surface to air SA-10, SA-6 in Shiraz City; AAA in Bandar Abbas

PACKAGE ELEMENTS

PKG#	FLIGHT	A/C	NO.	AIRBASE	TASK	TARGET
2025	Viper 1	F-16C	4	Al Dhafra	Pinpoint Strike	Shiraz AFB
2025	Viper 2	F-16C	4	Al Dhafra	Pinpoint Strike	Shiraz AFB
2025	Dodge 1	F-15E	2	Al Dhafra	Pinpoint Strike	Shiraz Weapon Factory
2025	Dodge 2	F-15E	2	Al Dhafra	Pinpoint Strike	Shiraz Weapon Factory
2025	Ford 1	F-15C	2	Al Minhad	TARCAP	Enemy Airborne Threat
2025	Ford 2	F-15C	2	Al Minhad	TARCAP	Enemy Airborne Threat
2026	Hawg 1	A-10C	2	Al Minhad	CAS	Assigned by JTAC
2026	Hawg 2	A-10C	2	Al Minhad	CAS	Assigned by JTAC

SUPPORT FLIGHT

FLIGHT	A/C	NO.	AIRBASE	TASK	COMM	TCN
Darkstar	E-3A	1	Liwa AFB	AWACS	UHF CH5	
Magic	E-2D	1	Liwa AFB	AWACS	UHF CH6	
Wizard	E-3A	1	Liwa AFB	AWACS	UHF CH7	
Texaco 3	KC-135	1	Liwa AFB	Refuel	UHF CH8	57X
Texaco 4	KC-135	1	Liwa AFB	Refuel	UHF CH9	58X
Texaco 5	KC-135	1	Liwa AFB	Refuel	UHF CH10	59X
Texaco 6	KC-135	1	Liwa AFB	Refuel	UHF CH11	60X
Texaco 7	KC-135	1	Liwa AFB	Refuel	UHF CH12	61X
Enfield	MQ-9	1	Khasab	AFAC	UHF CH13	
Springfield	MQ-9	1	Khasab	AFAC	UHF CH14	

ALTERNATE AIRFIELD

AIRFIELD	FREQUENCY	COORDINATE	REMARKS
Sharjah Intl	250.20 AM / 118.60 AM	N25°20'20" E55°30'14"	RWY 12/30
Bandar Lengeh	251.05 AM / 121.70 AM	N26°31'58" E54°49'40"	RWY 08/26

PART B. TACTICAL INFORMATION

MISSION: CM-2025 / 2026



LOADOUT



	9	8	7	6	5R	5	5L	4	3	2	1
Viper 1-1	9X	AC	84L	WT	T	ECM	H	WT	84L	AC	9X
Viper 1-2	9X	AC	84L	WT	T	ECM	H	WT	84L	AC	9X
Viper 1-3	9X	AC	84L	WT	T	ECM	H	WT	84L	AC	9X
Viper 1-4	9X	AC	84L	WT	T	ECM	H	WT	84L	AC	9X
Viper 2-1	9X	AC	2*82L	WT	T	ECM	H	WT	2*82L	AC	9X
Viper 2-2	9X	AC	2*82L	WT	T	ECM	H	WT	2*82L	AC	9X
Viper 2-3	9X	AC	2*82L	WT	T	ECM	H	WT	2*82L	AC	9X
Viper 2-4	9X	AC	2*82L	WT	T	ECM	H	WT	2*82L	AC	9X

FLIGHT PLAN (VIPER 1)

WP	NAME	TIME	SPEED	ALTITUDE	ACTION	REMARKS
0	ADB	0710L			Takeoff	Bingo 3750 lbs
1	DEP	0713L	0.60M	MSL 5K	Outbound	Contact Departure
2	RV	0718L	0.60M	MSL 25K	Regroup	Push Time 0725L
3	PRE	0735L	0.80M	MSL 26K	Ingress	Check In
4	AAR	0745L	0.80M	MSL 26K	Refuel	Texaco 3 / Texaco 4
5	REG	0820L	0.80M	MSL 30K	Regroup	Push Time 0820
6	TGT	0840L	0.80M	MSL 30K	Attack	Shiraz AFB Assets
7	EGR	0925L	0.75M	MSL 25K	Egress	Fence Out
8	RET	0950L	0.70M	MSL 15K	Inbound	Contact Arrival
9	ARR	1000L	0.40M	MSL 3K	Arrival	Turn Final
10	RWY	1005L			Landing	Runway 31L

FLIGHT PLAN (VIPER 2)

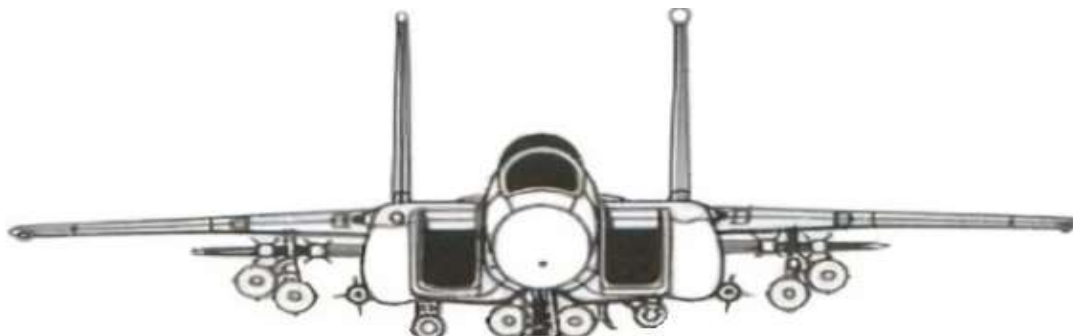
WP	NAME	TIME	SPEED	ALTITUDE	ACTION	REMARKS
0	ADB	0712L			Takeoff	Bingo 3750 lbs
1	DEP	0715L	0.60M	MSL 5K	Outbound	Contact Departure
2	RV	0720L	0.60M	MSL 25K	Regroup	Push Time 0725L
3	PRE	0735L	0.80M	MSL 26K	Ingress	Check In
4	AAR	0745L	0.80M	MSL 26K	Refuel	Texaco 3 / Texaco 4
5	REG	0820L	0.80M	MSL 30K	Regroup	Push Time 0820
6	TGT	0840L	0.80M	MSL 30K	Attack	Shiraz AFB Aircraft
7	EGR	0925L	0.75M	MSL 25K	Egress	Fence Out
8	RET	0950L	0.70M	MSL 15K	Inbound	Contact Arrival
9	ARR	1000L	0.40M	MSL 3K	Arrival	Turn Final
10	RWY	1005L			Landing	Runway 31L

PART B. TACTICAL INFORMATION

MISSION: CM-2025 / 2026



LOADOUT



	8B	8	8A	RC	7C	6C	NVP	5	TGP	4C	3C	LC	2B	2	2A
Dodge 1-1	9P	WT	AC	84L			N	84L	T			84L	AC	WT	9P
Dodge 1-2	9P	WT	AC	84L			N	84L	T			84L	AC	WT	9P
Dodge 2-1	9P	WT	AC	84L			N	84L	T			84L	AC	WT	9P
Dodge 2-2	9P	WT	AC	84L			N	84L	T			84L	AC	WT	9P

FLIGHT PLAN (DODGE 1)

WP	NAME	TIME	SPEED	ALTITUDE	ACTION	REMARKS
0	ADB	0714L			Takeoff	Bingo 4800 lbs
1	DEP	0717L	0.60M	MSL 5K	Outbound	Contact Departure
2	RV	0722L	0.60M	MSL 25K	Regroup	Push Time 0725L
3	PRE	0735L	0.80M	MSL 26K	Ingress	Check In
4	AAR	0745L	0.80M	MSL 26K	Refuel	Texaco 3 / Texaco 4
5	REG	0820L	0.80M	MSL 30K	Regroup	Push Time 0820
6	TGT	0840L	0.80M	MSL 30K	Attack	Shiraz Weapon Factory
7	EGR	0925L	0.75M	MSL 25K	Egress	Fence Out
8	RET	0950L	0.70M	MSL 15K	Inbound	Contact Arrival
9	ARR	1000L	0.40M	MSL 3K	Arrival	Turn Final
10	RWY	1005L			Landing	Runway 31L

FLIGHT PLAN (DODGE 2)

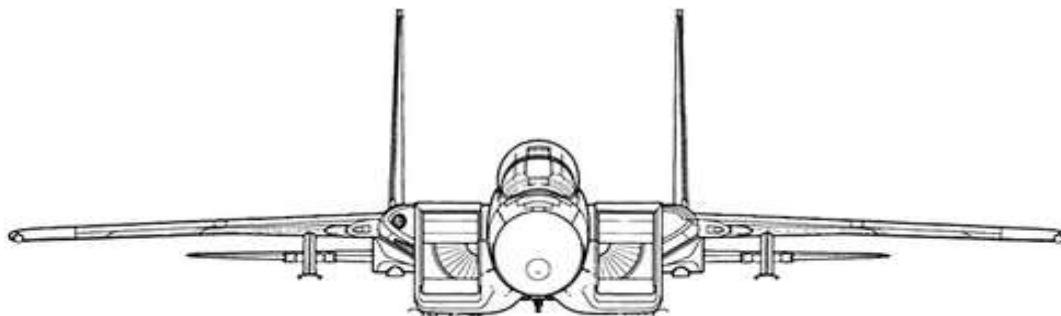
WP	NAME	TIME	SPEED	ALTITUDE	ACTION	REMARKS
0	ADB	0715L			Takeoff	Bingo 4800 lbs
1	DEP	0718L	0.60M	MSL 5K	Outbound	Contact Departure
2	RV	0723L	0.60M	MSL 25K	Regroup	Push Time 0725L
3	PRE	0735L	0.80M	MSL 26K	Ingress	Check In
4	AAR	0745L	0.80M	MSL 26K	Refuel	Texaco 3 / Texaco 4
5	REG	0820L	0.80M	MSL 30K	Regroup	Push Time 0820
6	TGT	0840L	0.80M	MSL 30K	Attack	Shiraz Weapon Factory
7	EGR	0925L	0.75M	MSL 25K	Egress	Fence Out
8	RET	0950L	0.70M	MSL 15K	Inbound	Contact Arrival
9	ARR	1000L	0.40M	MSL 3K	Arrival	Turn Final
10	RWY	1005L			Landing	Runway 31L

PART B. TACTICAL INFORMATION

MISSION: CM-2025 / 2026



LOADOUT



	11	10	9	8	7	6	5	4	3	2	1
Ford 1-1	AC	WT	AC	AB	AB		AB	AB	AC	WT	AC
Ford 1-2	AC	WT	AC	AB	AB		AB	AB	AC	WT	AC
Ford 2-1	AC	WT	AC	AB	AB		AB	AB	AC	WT	AC
Ford 2-2	AC	WT	AC	AB	AB		AB	AB	AC	WT	AC

FLIGHT PLAN (FORD 1)

WP	NAME	TIME	SPEED	ALTITUDE	ACTION	REMARKS
0	AMB	0710L			Takeoff	Bingo 4500 lbs
1	DEP	0712L	0.60M	MSL 5K	Outbound	Contact Departure
2	RV	0716L	0.60M	MSL 25K	Regroup	Push Time 0720L
3	PRE	0725L	0.80M	MSL 28K	Ingress	Check In
4	AAR	0735L	0.80M	MSL 28K	Refuel	Texaco 6
5	REG	0820L	0.80M	MSL 31K	Regroup	Push Time 0820
6	TAR	0840L	0.80M	MSL 35K	TARCAP	VUL Time 30 min
7	EGR	0925L	0.75M	MSL 25K	Egress	Fence Out
8	RET	0945L	0.70M	MSL 15K	Inbound	Contact Arrival
9	ARR	0950L	0.40M	MSL 3K	Arrival	Turn Final
10	RWY	0953L			Landing	Runway 27

FLIGHT PLAN (FORD 2)

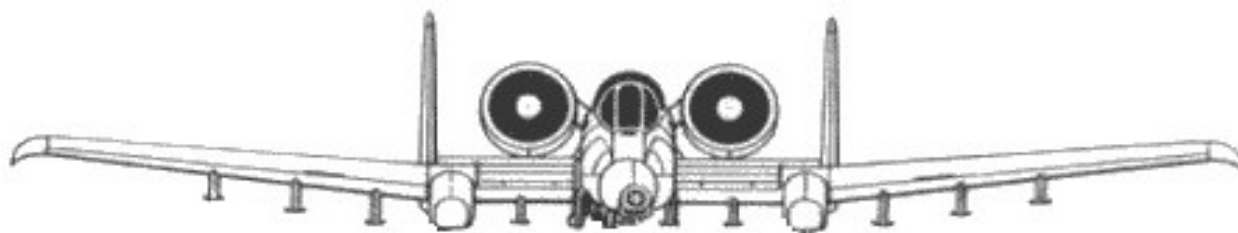
WP	NAME	TIME	SPEED	ALTITUDE	ACTION	REMARKS
0	AMB	0711L			Takeoff	Bingo 4500 lbs
1	DEP	0713L	0.60M	MSL 5K	Outbound	Contact Departure
2	RV	0717L	0.60M	MSL 25K	Regroup	Push Time 0720L
3	PRE	0725L	0.80M	MSL 28K	Ingress	Check In
4	AAR	0735L	0.80M	MSL 28K	Refuel	Texaco 6
5	REG	0820L	0.80M	MSL 31K	Regroup	Push Time 0820
6	TAR	0840L	0.80M	MSL 35K	TARCAP	VUL Time 30 min
7	EGR	0925L	0.75M	MSL 25K	Egress	Fence Out
8	RET	0945L	0.70M	MSL 15K	Inbound	Contact Arrival
9	ARR	0950L	0.40M	MSL 3K	Arrival	Turn Final
10	RWY	0953L			Landing	Runway 27

PART B. TACTICAL INFORMATION

MISSION: CM-2025 / 2026



LOADOUT



	11	10	9	8	7	6	5	4	3	2	1
Hawg 1-1	2*9M	T	3*65D	38L	38L		38L	38L	3*65D	C97 ECM	
Hawg 1-2	2*9M	T	3*65D	38L	38L		38L	38L	3*65D	C97 ECM	
Hawg 2-1	2*9M	T	3*65D	38L	38L		38L	38L	3*65D	C97 ECM	
Hawg 2-2	2*9M	T	3*65D	38L	38L		38L	38L	3*65D	C97 ECM	

FLIGHT PLAN (HAWG 1)

WP	NAME	TIME	SPEED	ALTITUDE	ACTION	REMARKS
0	AMB	0712L			Takeoff	Bingo 3000 lbs
1	DEP	0715L	0.40M	MSL 5K	Outbound	Contact Departure
2	RV	0720L	0.40M	MSL 15K	Regroup	Push Time 0725L
3	PRE	0732L	0.50M	MSL 16K	Ingress	Check In
4	AAR	0742L	0.50M	MSL 16K	Refuel	Texaco 7
5	CP	0810L	0.40M	MSL 15K	Fence In	Contact JTAC
6	CAS	0815L	0.40M	MSL 15K	CAS	Bandar Abbas
7	EGR	0922L	0.50M	MSL 15K	Egress	Fence Out
8	RET	0940L	0.50M	MSL 15K	Inbound	Contact Arrival
9	ARR	0947L	0.30M	MSL 3K	Arrival	Turn Final
10	RWY	0950L			Landing	Runway 31L

FLIGHT PLAN (HAWG 1)

WP	NAME	TIME	SPEED	ALTITUDE	ACTION	REMARKS
0	AMB	0713L			Takeoff	Bingo 3000 lbs
1	DEP	0716L	0.40M	MSL 5K	Outbound	Contact Departure
2	RV	0721L	0.40M	MSL 15K	Regroup	Push Time 0725L
3	PRE	0732L	0.50M	MSL 16K	Ingress	Check In
4	AAR	0742L	0.50M	MSL 16K	Refuel	Texaco 7
5	CP	0810L	0.40M	MSL 15K	Fence In	Contact JTAC
6	CAS	0815L	0.40M	MSL 15K	CAS	Bandar Abbas
7	EGR	0922L	0.50M	MSL 15K	Egress	Fence Out
8	RET	0940L	0.50M	MSL 15K	Inbound	Contact Arrival
9	ARR	0947L	0.30M	MSL 3K	Arrival	Turn Final
10	RWY	0950L			Landing	Runway 31L

PART B. TACTICAL INFORMATION

MISSION: CM-2025 / 2026

**COMMS LADDER**

UHF CODE		AGCY	FREQ	MOD	VHF CODE		AGCY	FREQ	MOD
1	Green 1	Al Dhafra	251.10	AM	1	Green 1	Al Dhafra	126.50	AM
2	Green 2	Al Minhad	250.10	AM	2	Green 2	Al Minhad	118.55	AM
3	Green 3	Liwa	250.95	AM	3	Green 3	Liwa	119.30	AM
4	Green 4	Khasab	250.00	AM	4	Green 4	Khasab	124.35	AM
5	Red 1	Darkstar	256.00	AM	5	Yellow 1	Viper 1	131.10	AM
6	Red 2	Magic	264.00	AM	6	Yellow 2	Viper 2	131.20	AM
7	Red 3	Wizard	265.00	AM	7	Yellow 3	Viper 3	131.30	AM
8	Violet 1	Texaco 3	257.30	AM	8	Yellow 4	Viper 4	131.40	AM
9	Violet 2	Texaco 4	257.40	AM	9	Orange 1	Dodge 1	132.10	AM
10	Violet 3	Texaco 5	257.50	AM	10	Orange 2	Dodge 2	132.20	AM
11	Violet 4	Texaco 6	257.60	AM	11	Orange 3	Dodge 3	132.30	AM
12	Violet 5	Texaco 7	257.70	AM	12	Orange 4	Dodge 4	132.40	AM
13	Gold 1	Enfield	231.10	AM	13	Blue 1	Hawg 1	141.10	AM
14	Gold 2	Springfield	232.10	AM	14	Blue 2	Hawg 2	141.20	AM
15	Gold 3	Skyfield	233.10	AM	15	Blue 3	Hawg 3	141.30	AM
16	Gold 4	Starfield	234.10	AM	16	Blue 4	Hawg 4	141.40	AM
17					17	Indigo 1	Ford 1	142.10	AM
18					18	Indigo 2	Ford 2	142.20	AM
19					19	Indigo 3	Ford 3	142.30	AM
20					20	Indigo 4	Ford 4	142.40	AM

OTHER TACTICAL INFO

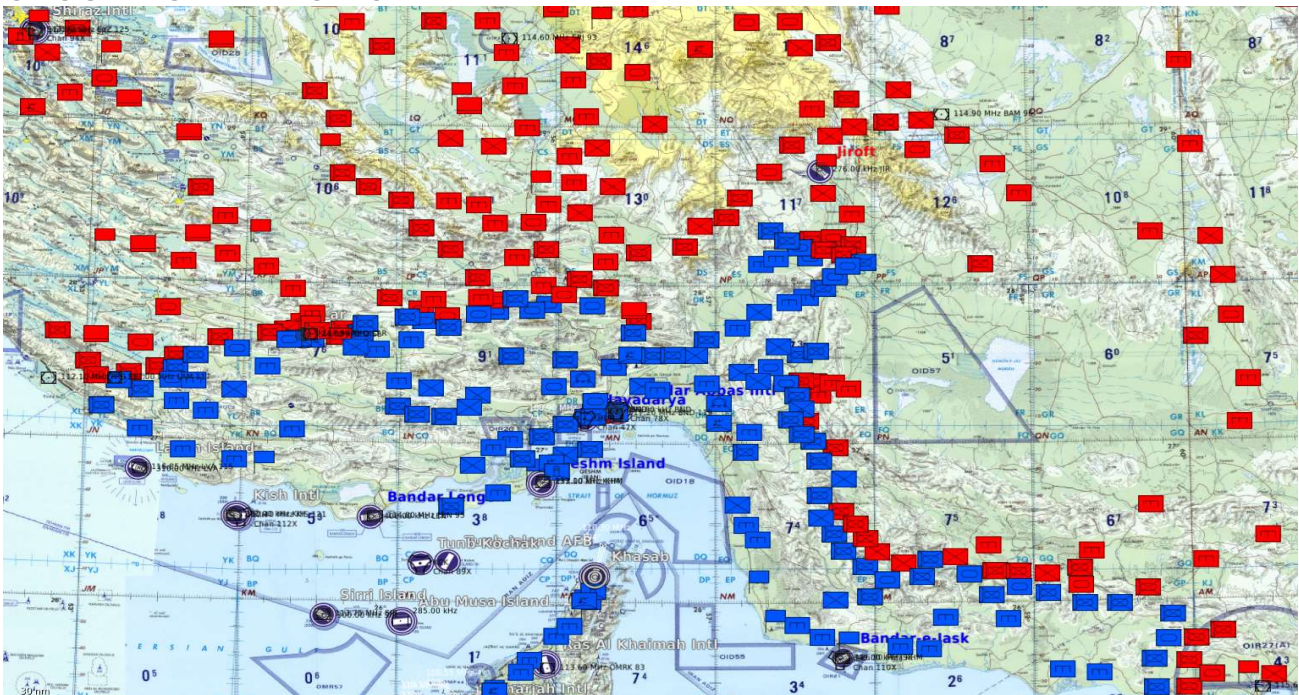
CALLSIGN	TAIL#	ROLE	A/A TCN	DATALINK	LSR CODE
Viper 1-1	91	Lead	11X	VR11	1651
Viper 1-2	92	Wing	12X	VR12	1652
Viper 1-3	93	Lead	13X	VR13	1653
Viper 1-4	94	Wing	14X	VR14	1654
Viper 2-1	95	Lead	15X	VR21	1655
Viper 2-2	96	Wing	16X	VR22	1656
Viper 2-3	97	Lead	17X	VR23	1657
Viper 2-4	98	Wing	18X	VR24	1658
Dodge 1-1	81	Lead	21X	DE11	1661
Dodge 1-2	82	Wing	22X	DE12	1662
Dodge 2-1	83	Lead	23X	DE21	1663
Dodge 2-2	84	Wing	24X	DE22	1664
Hawg 1-1	171	Lead	31X	HG11	1671
Hawg 1-2	172	Wing	32X	HG12	1672
Hawg 2-1	173	Lead	33X	HG21	1673
Hawg 2-2	174	Wing	34X	HG22	1674
Ford 1-1	201	Lead		FD11	
Ford 1-2	202	Wing		FD12	
Ford 2-1	203	Lead		FD21	
Ford 2-2	204	Wing		FD22	



AIR OPERATION CHART



GROUND OPERATION CHART



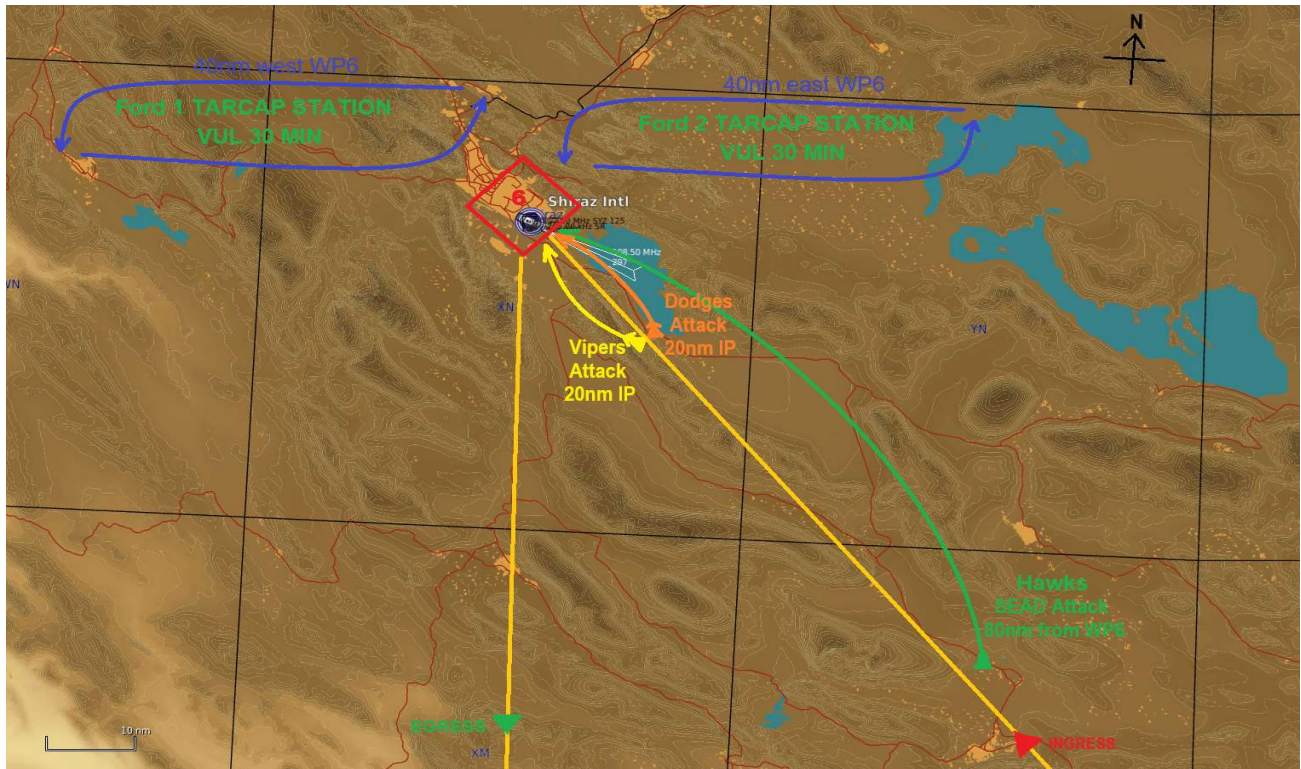


FLIGHT PLAN

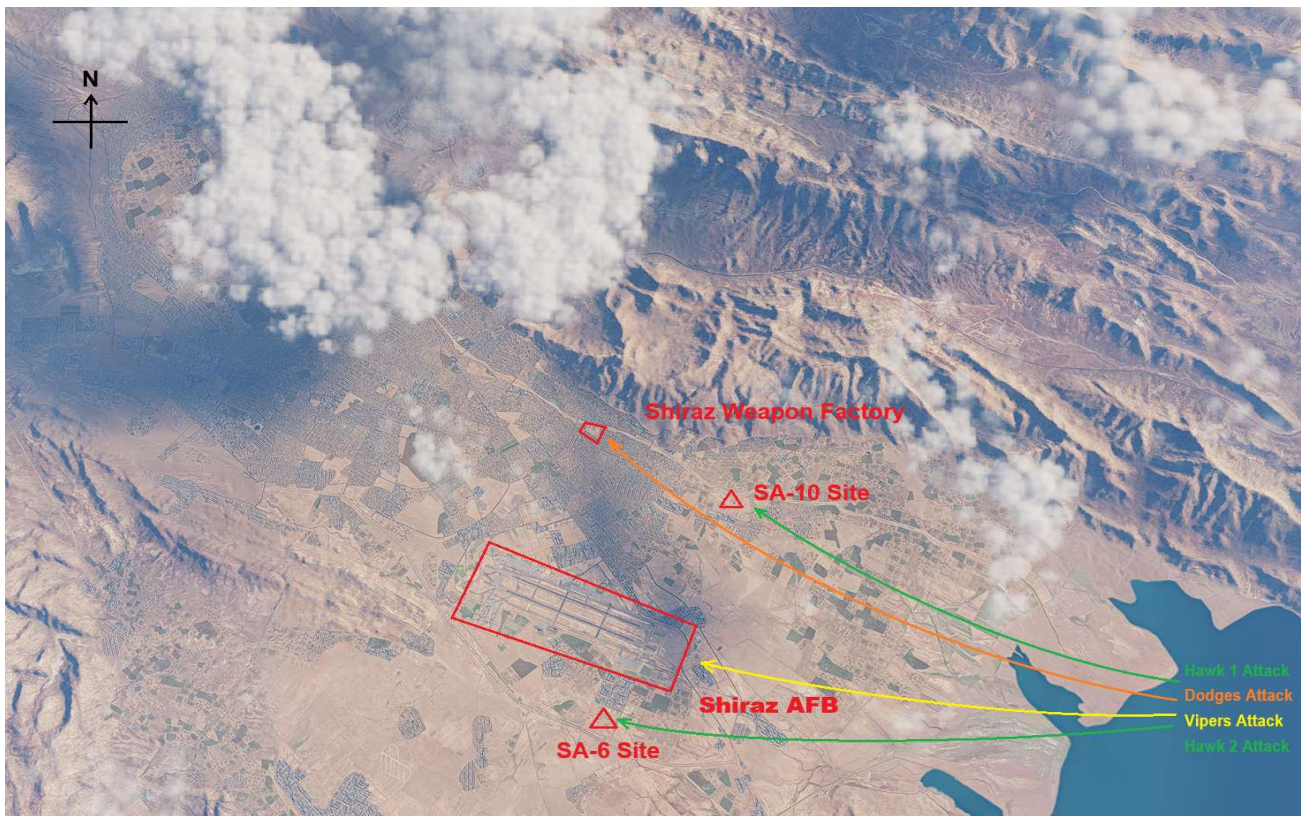




ATTACK PLAN

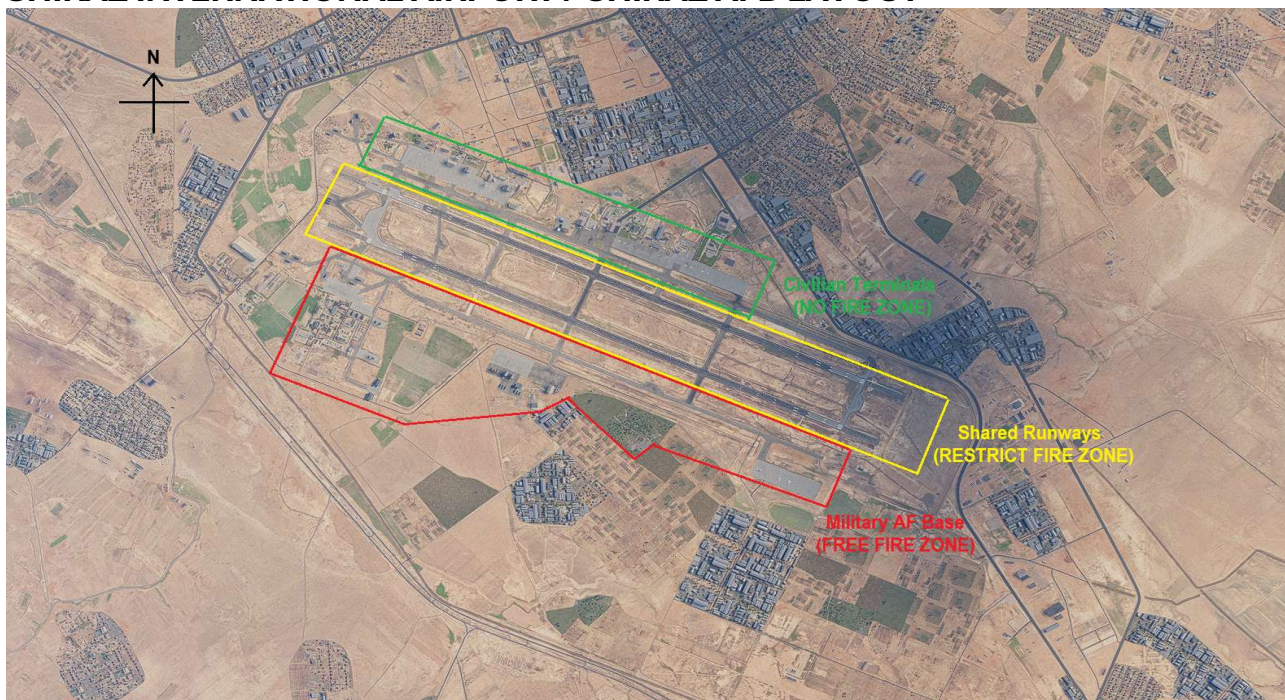


SHIRAZ CITY MAP





SHIRAZ INTERNATIONAL AIRPORT / SHIRAZ AFB LAYOUT



SHIRAZ AFB TARGETS (VIPERS)



NOTE: Viper 1 attack PRIMARY fixed targets (A1-A8)
Viper 2 attack TERTIARY mobile targets (military aircraft, undesignated)



SHIRAZ WEAPON FACTORY



SHIRAZ WEAPON FACTORY TARGETS (DODGES)





BANDAR ABBAS SATELLITE IMAGE



BANDAR ABBAS CITY CAS CHART (HAWGS)

